

# **Pharmacy to Kennedy Station Construction Liaison Committee Meeting**

Eglinton Crosstown LRT

January 31, 2023

# LAND ACKNOWLEDGEMENT

Let us take a moment to acknowledge we are on lands that have been, and continue to be, home to many Indigenous Peoples including the Anishnabeg, the Haudenosaunee and the Huron-Wendat peoples.

We are all Treaty people. Many of us have come here as settlers, as immigrants or involuntarily as part of the trans-Atlantic slave trade, in this generation, or generations past.

We acknowledge the historic and continued impacts of colonization and the need to work towards meaningful reconciliation with the original caretakers of this land.

We acknowledge that Metrolinx operates on territories and lands covered by many treaties that affirm and value the rights of Indigenous communities, Nations and Peoples.

We understand the importance of working towards reconciliation with the original caretakers of this land. At Metrolinx, we will conduct business in a manner that is built on a foundation of trust, respect and collaboration.

# **Section Three and Four At-Grade: O'Connor Stop to Ionview Stop**

# CONSTRUCTION ACTIVITIES

Location	Activity	Approx. Date & Duration
Brentcliffe - Kennedy	<ul style="list-style-type: none"> <li>• Vehicle testing</li> <li>• Landscaping and green track installation and maintenance along Eglinton</li> </ul>	<ul style="list-style-type: none"> <li>• Ongoing through Spring 2023</li> <li>• Resuming late-February, and anticipated to be completed by approx. mid-Spring 2023</li> </ul>
O'Connor - Ionview Stop	<ul style="list-style-type: none"> <li>• Traffic Sign Installations</li> <li>• Line Painting</li> </ul>	<ul style="list-style-type: none"> <li>• Underway through late-Spring 2023</li> </ul>
Sidewalk Repairs	<ul style="list-style-type: none"> <li>• Along Eglinton Ave East</li> </ul>	<ul style="list-style-type: none"> <li>• As early as mid-March 2023</li> </ul>
<ul style="list-style-type: none"> <li>• O'Connor Stop (Victoria Park Ave)</li> <li>• Pharmacy Stop</li> <li>• Hakimi Lebovic Stop</li> <li>• Golden Mile Stop (Warden Ave)</li> <li>• Birchmount Stop</li> <li>• Ionview Stop</li> </ul>	<ul style="list-style-type: none"> <li>• Architectural finishes / details</li> <li>• Electrical finishes</li> </ul>	<ul style="list-style-type: none"> <li>• Underway through late-Spring 2023</li> </ul>

## EAST TESTING & COMMISSIONING



- On May 25, 26, 27, 31 and June 1 and 2, 6 light rail vehicles (LRVs) were delivered to the east end of the alignment.
- Testing and commissioning activities will be conducted between Brentcliffe Road and Kennedy Road through early 2023.
- Dynamic Testing began August 24, 2021, and will last through early 2023.
- The LRVs will run mainly on the surface along a track in the center of Eglinton Avenue.

# CONSTRUCTION PROGRESS PHOTOS

SIDEWALK NEAR KENNEDY PORTAL



GUARDRAIL INSTALLATION COMPLETED BY GOLDEN MILE STOP

# Kennedy Station

# KENNEDY STATION UPDATE

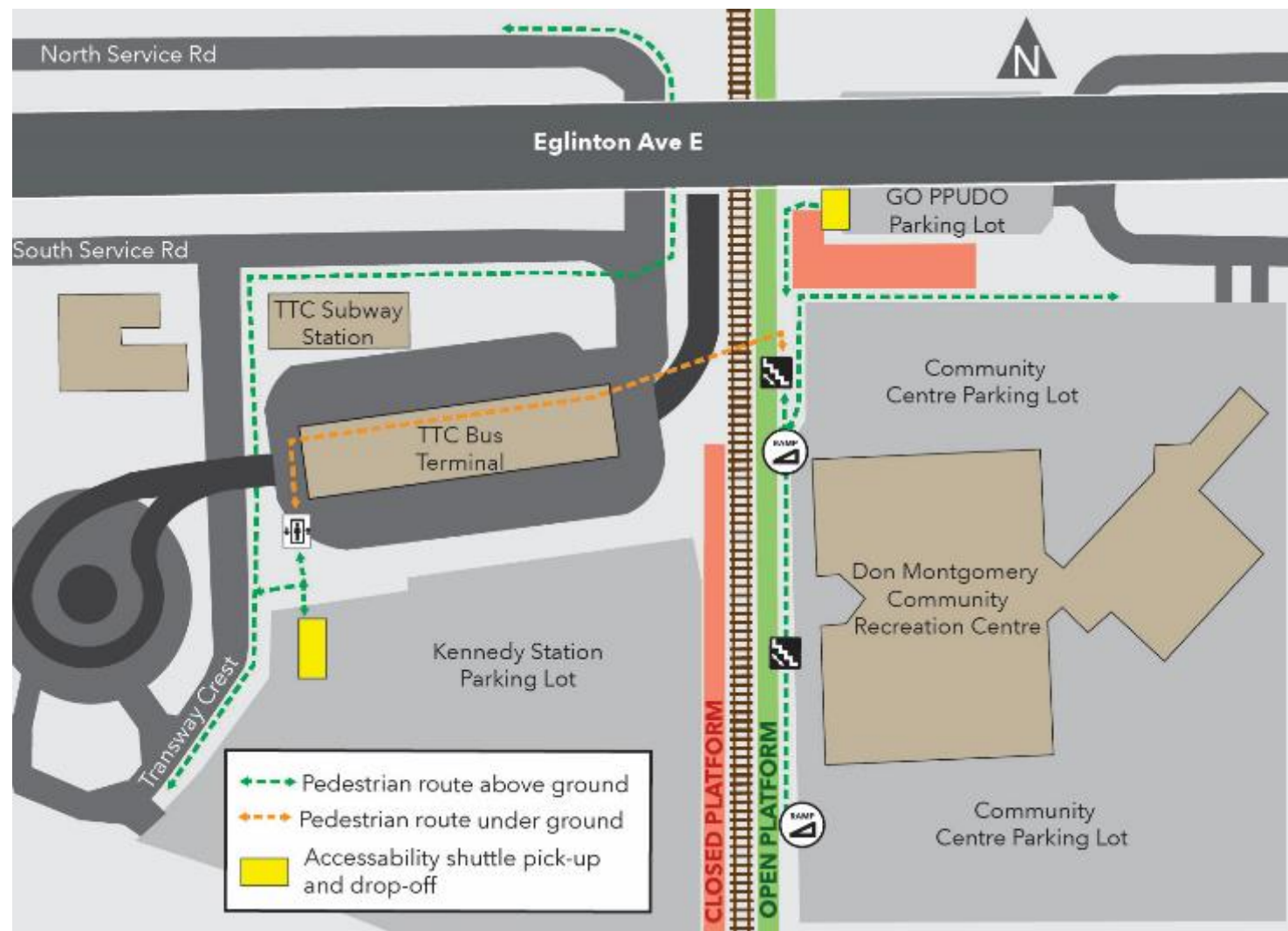
Location	Activity	Approx. Date & Duration
Brentcliffe - Kennedy	Vehicle Testing	<ul style="list-style-type: none"> <li>Ongoing</li> </ul>
Kennedy Station Main Entrance	<ul style="list-style-type: none"> <li>Electrical, mechanical and architectural finishes</li> <li>Landscaping works (resuming in late-February)</li> <li>Station and systems testing and inspections and station cleaning</li> </ul>	<ul style="list-style-type: none"> <li>Underway through late-Spring 2023</li> </ul>
Kennedy Station Box	<ul style="list-style-type: none"> <li>Electrical, mechanical and architectural finishes</li> <li>Station and systems testing and inspections and station cleaning</li> </ul>	<ul style="list-style-type: none"> <li>Underway through late-Spring 2023</li> </ul>
Kennedy Station GO Entrance and Platform	<ul style="list-style-type: none"> <li>Electrical, mechanical and architectural finishes</li> <li>Station and systems testing and inspections and station cleaning</li> </ul>	<ul style="list-style-type: none"> <li>Underway through late-Spring 2023</li> </ul>
Kennedy Station - East of GO	<ul style="list-style-type: none"> <li>Tiling, glazing, cladding, sign band installations, and other architectural finishes</li> <li>Pedestrian tunnel works</li> <li>Electrical and mechanical installations, fire stopping</li> <li>Landscaping works resuming in late-February</li> </ul>	<ul style="list-style-type: none"> <li>Underway through late-Spring 2023</li> </ul>



# GO PLATFORM SHIFT AT KENNEDY STATION

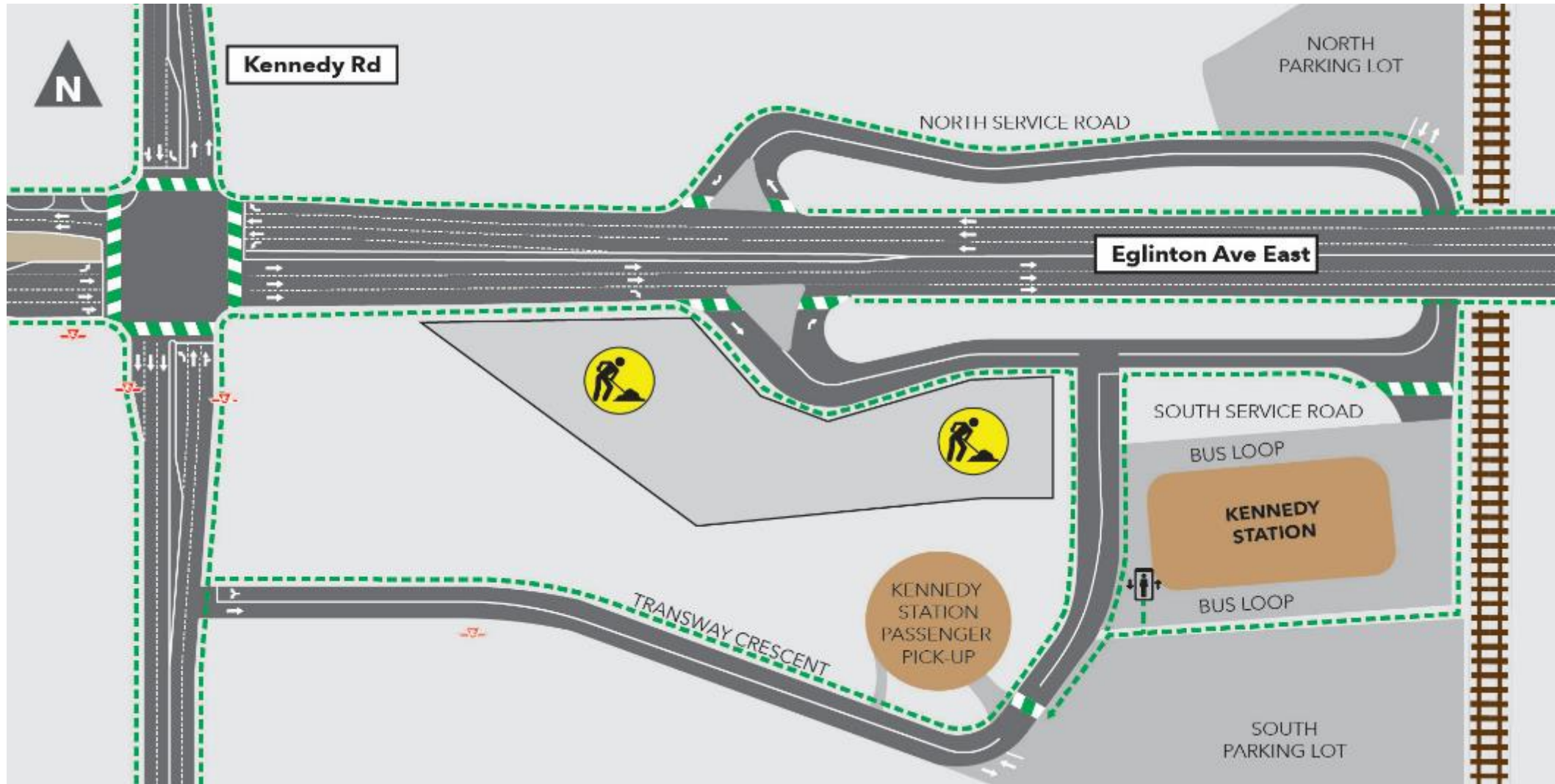
Ongoing through 2023

- GO Train service will continue at the east platform through 2023.
- Pedestrians will be rerouted through Kennedy TTC Subway Station.
- Accessibility shuttle services will be provided to riders with disabilities who wish to travel to and from Kennedy GO East Platform and Kennedy TTC Subway Station.
- **Accessibility shuttle services will require a 48-hour advanced booking.**
- Pick-up and drop-off locations for the accessibility shuttle will be located in the Kennedy Station parking lot and the GO customer pick-up and drop-off (PPUDO) parking lot (refer to map).



# KENNEDY STATION TRAFFIC CONFIGURATION

Through early 2023



# CONSTRUCTION PROGRESS PHOTOS



ART INSTALLATION ONGOING IN EAST PEDESTRIAN TUNNEL



CLEANING ONGOING THROUGHOUT THE STATION

# CONSTRUCTION PROGRESS PHOTOS



